



Carnation Close

East Malling, West Malling ME19 6EZ

- Recently Renovated Throughout
- Three Good Sized Bedrooms Each With Built In Storage
- Private Driveway
- Modern Fitted Kitchen With Integrated Appliances
- Downstairs W/C
- Front To Back Through Lounge With Media Wall

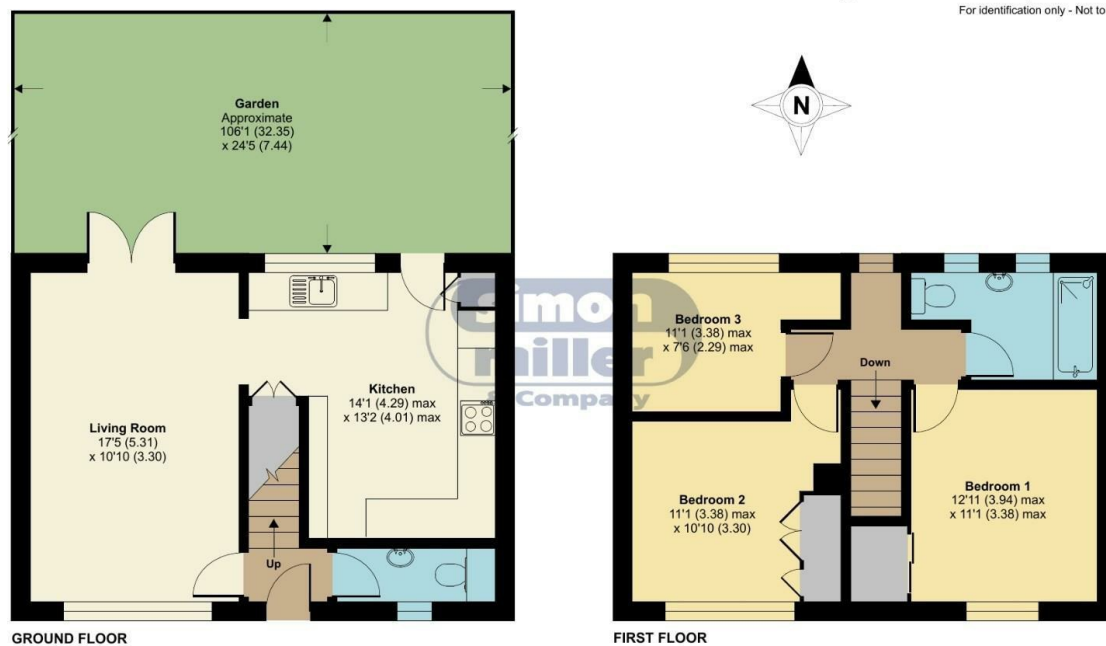
Offers In Excess Of £375,000 Freehold

Local Authority
Council Tax Band C
EPC Rating C

Carnation Close, East Malling, West Malling, ME19

Approximate Area = 848 sq ft / 78.7 sq m

For identification only - Not to scale



Floor plan produced in accordance with RICS Property Measurement Standards incorporating International Property Measurement Standards (IPMS2 Residential). © nichecom 2024. Produced for Simon Miller & Company. REF: 1089217

Malling Office

777 London Road, Larkfield, Aylesford,
Kent, ME20 6DE

Contact

01732 875706
larkfieldsales@simonmiller.co.uk
<https://simonmiller.co.uk/>

Agents Note: Whilst every care has been taken to prepare these particulars, they are for guidance purposes only. All measurements are approximate and for general guidance purposes only and whilst every care has been taken to ensure accuracy, they should not be relied upon and potential buyers/tenants are advised to recheck the measurements.

